

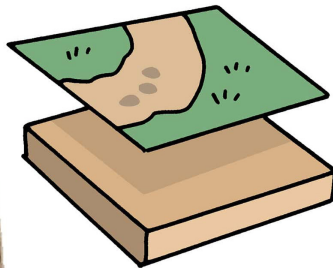
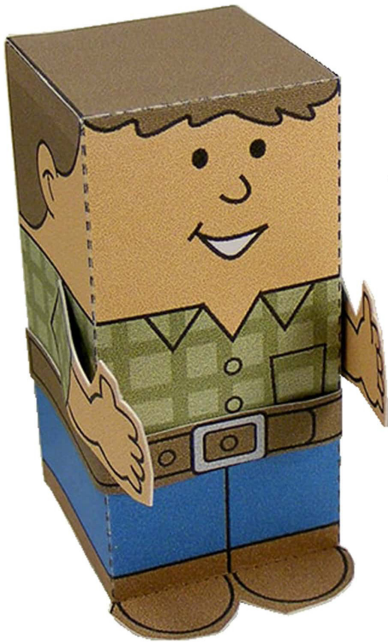
Scenery MiniWorld

Terrain Tiles - set 4

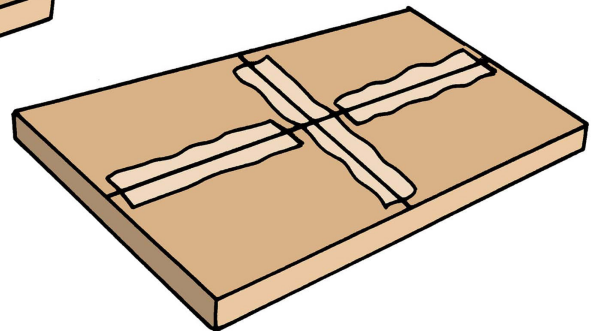
How to assemble your terrain tiles:

There are many different ways. It's up to you to experiment and find what you prefer.

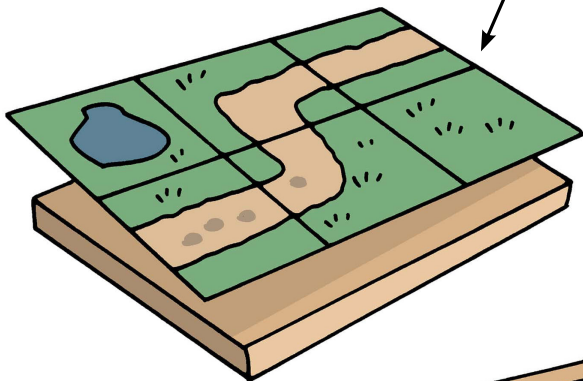
Cut out each terrain tile individually and glue it to a piece of cardboard, foam core, or display board of the same size.



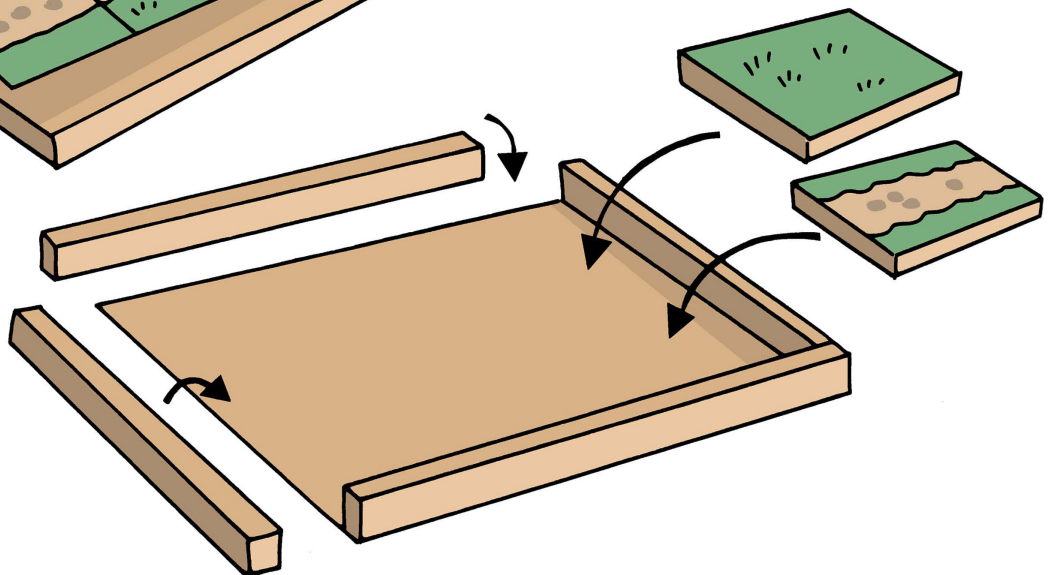
Then you can simply attach them together with a piece of tape on the back. That way, if in the future you wish to change the order of your tiles, it will be easy to separate and rearrange them.



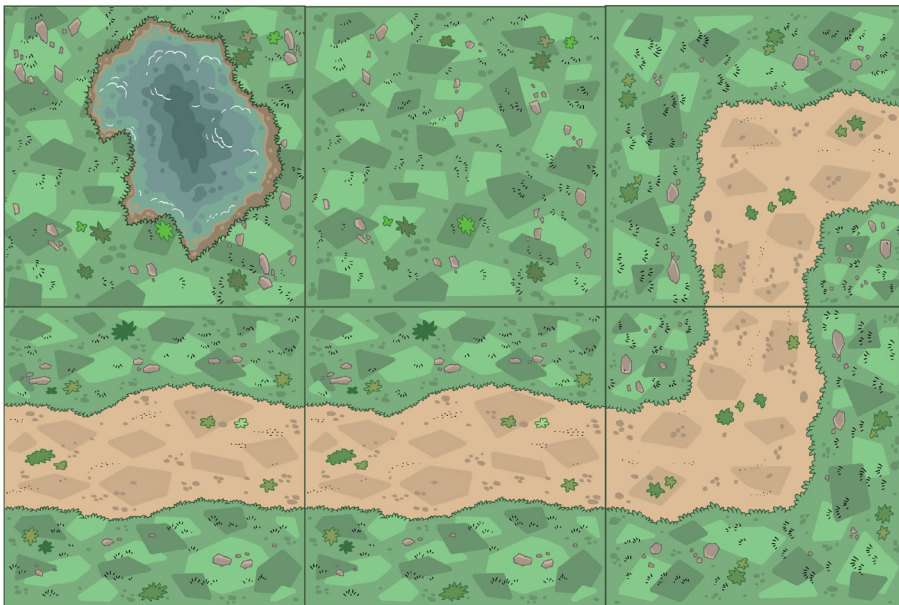
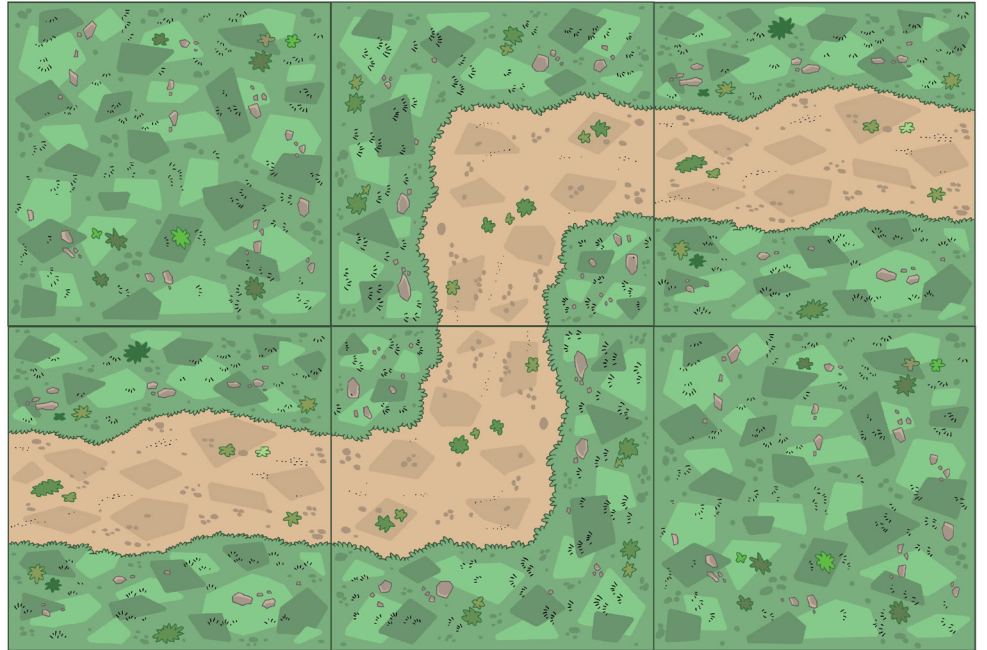
Or you can glue them all together.



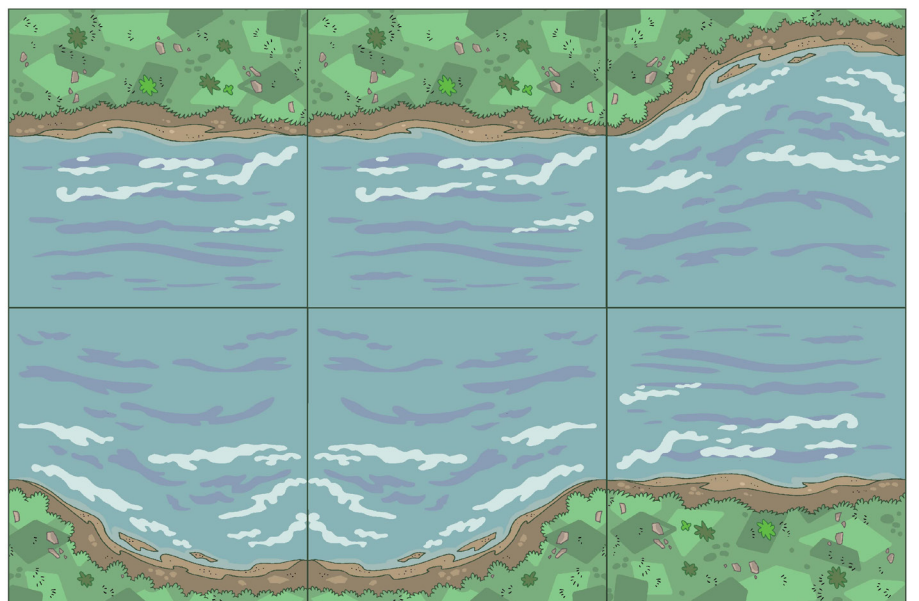
Another option is to prepare each piece as shown above. Then prepare a frame with cardboard or foam core that you can set your terrain tiles within without the need to glue or tape them together. This makes it easier to rearrange the tiles as desired.



Sample ideas
for arranging
the floor tiles.



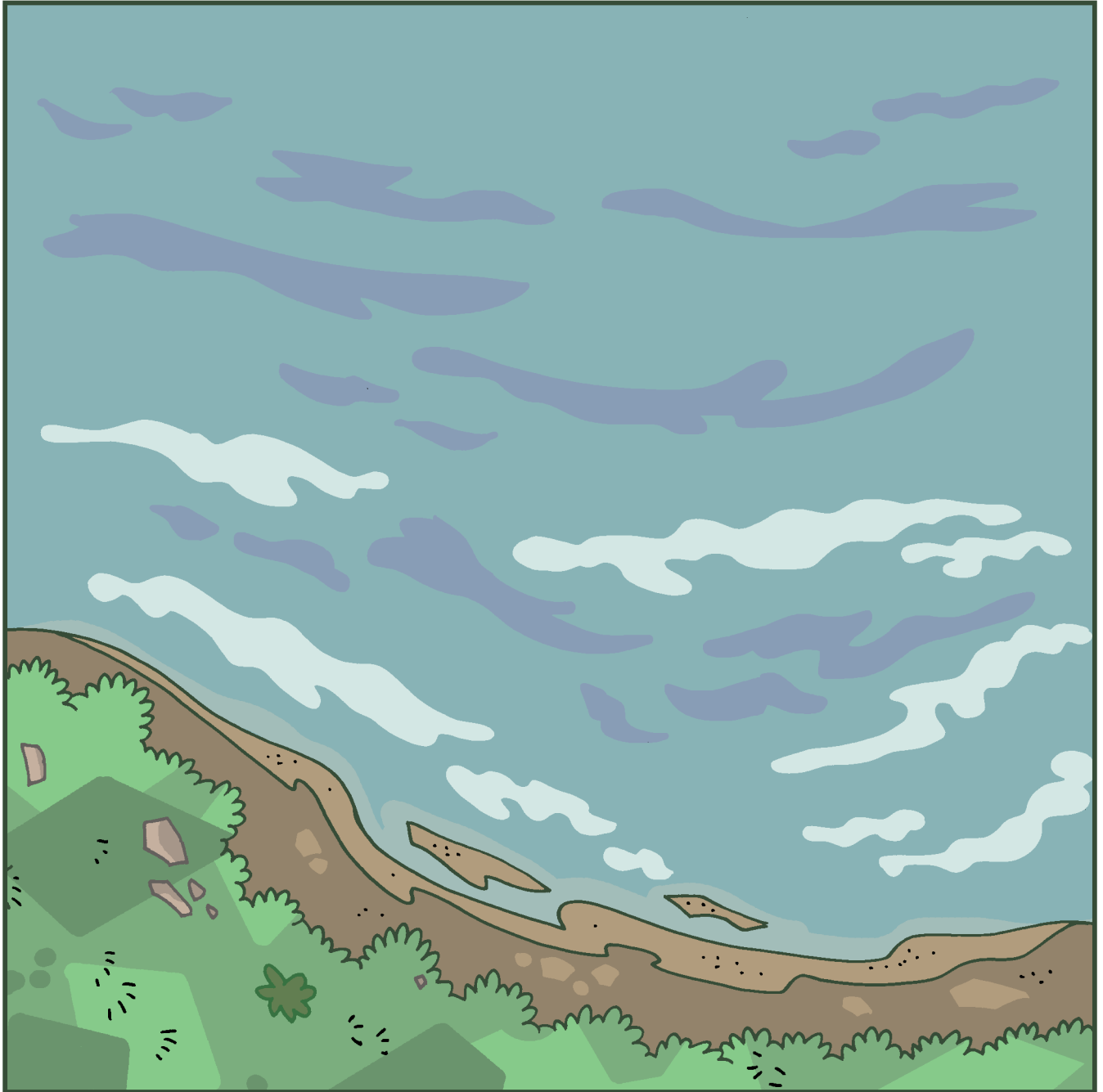
There are many
other patterns you
can create. Enjoy
experimenting. And
don't be limited to
only six tiles. Print
and use as many
tiles as you like.



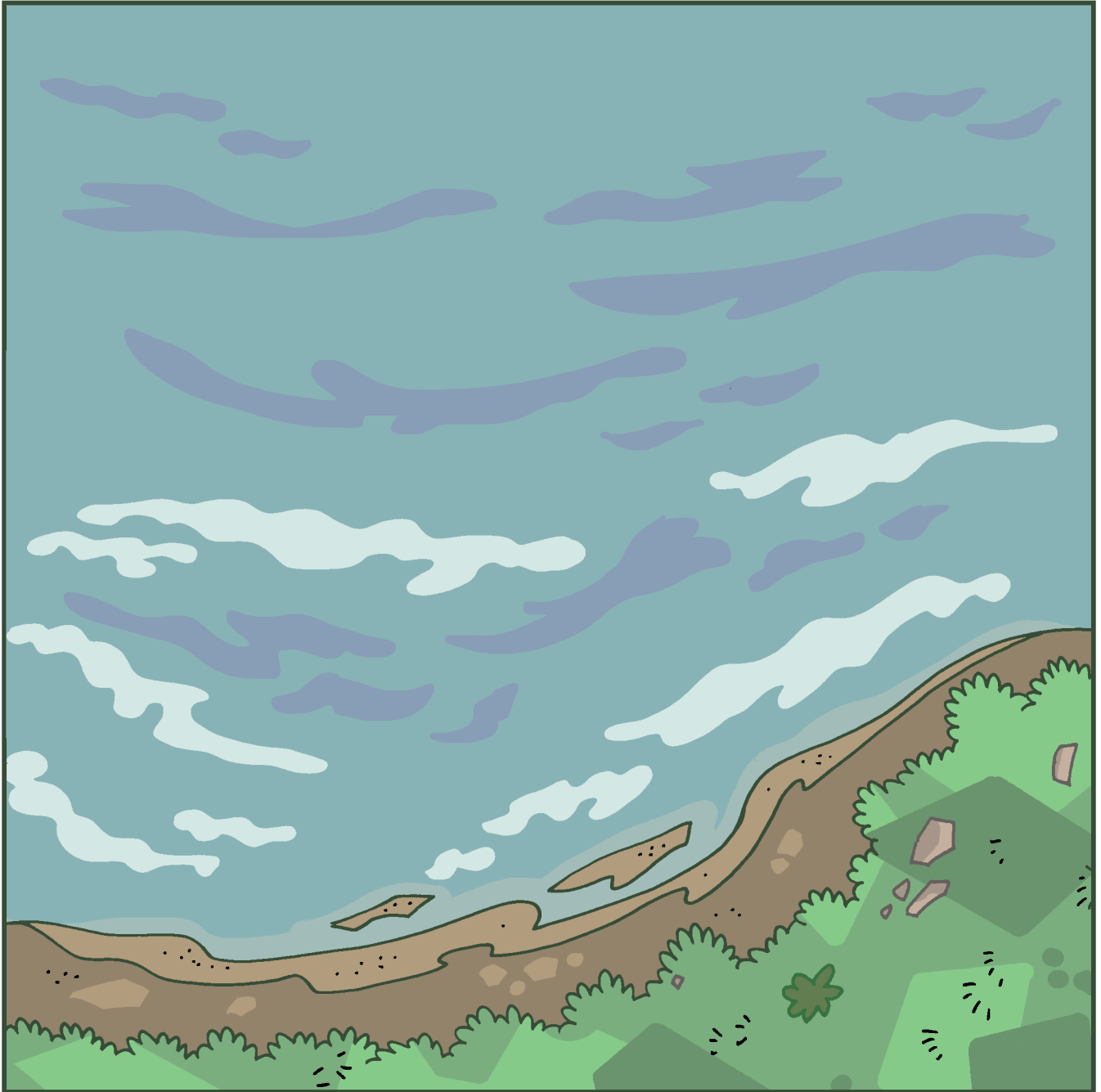
www.mylittlehouse.org

Copyright © 2018 by Didier Martin. All rights reserved. No parts of this product may be reproduced in any form, by any electronic or mechanical means without permission in writing from the author.

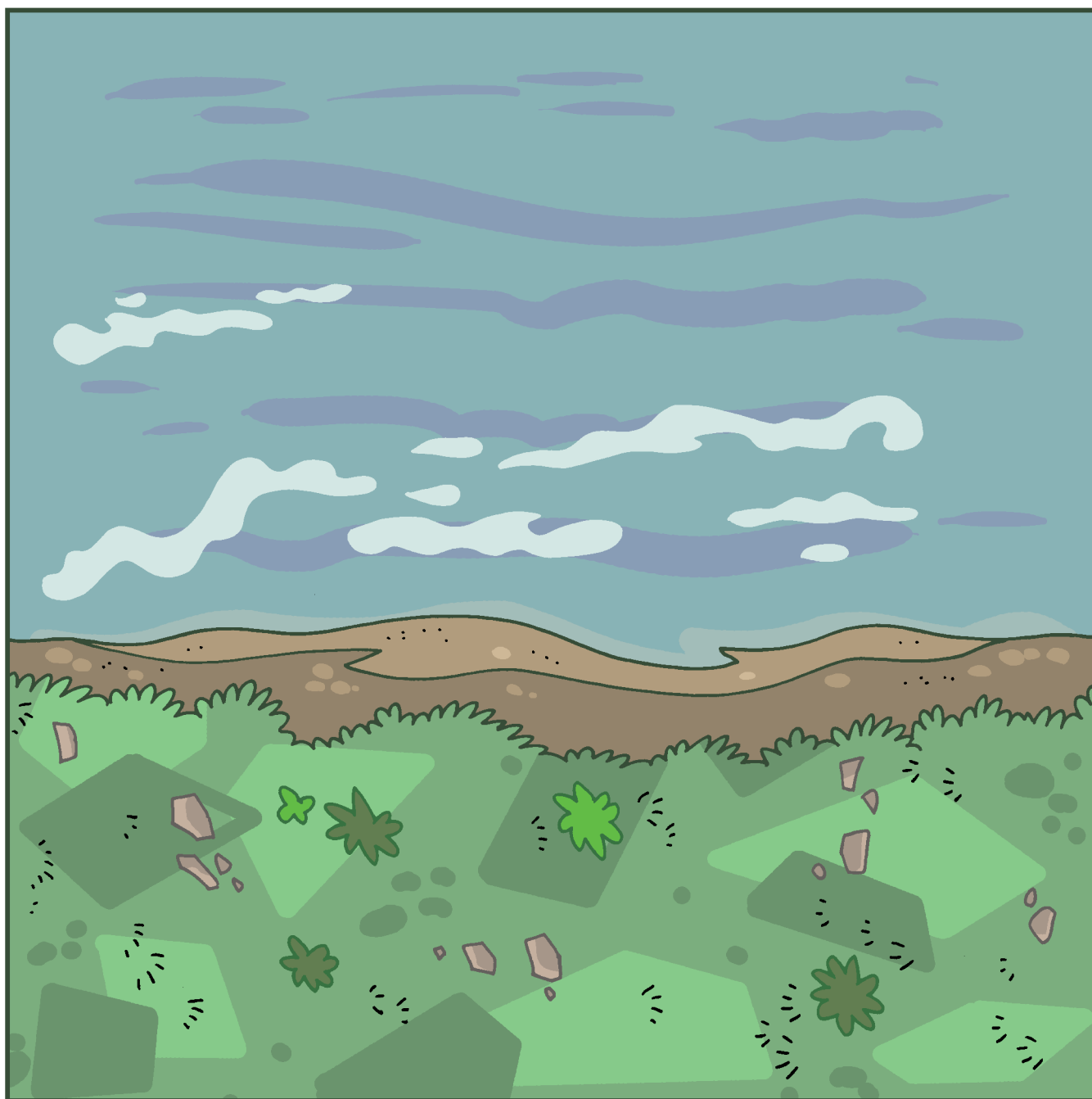
Water and grass 1



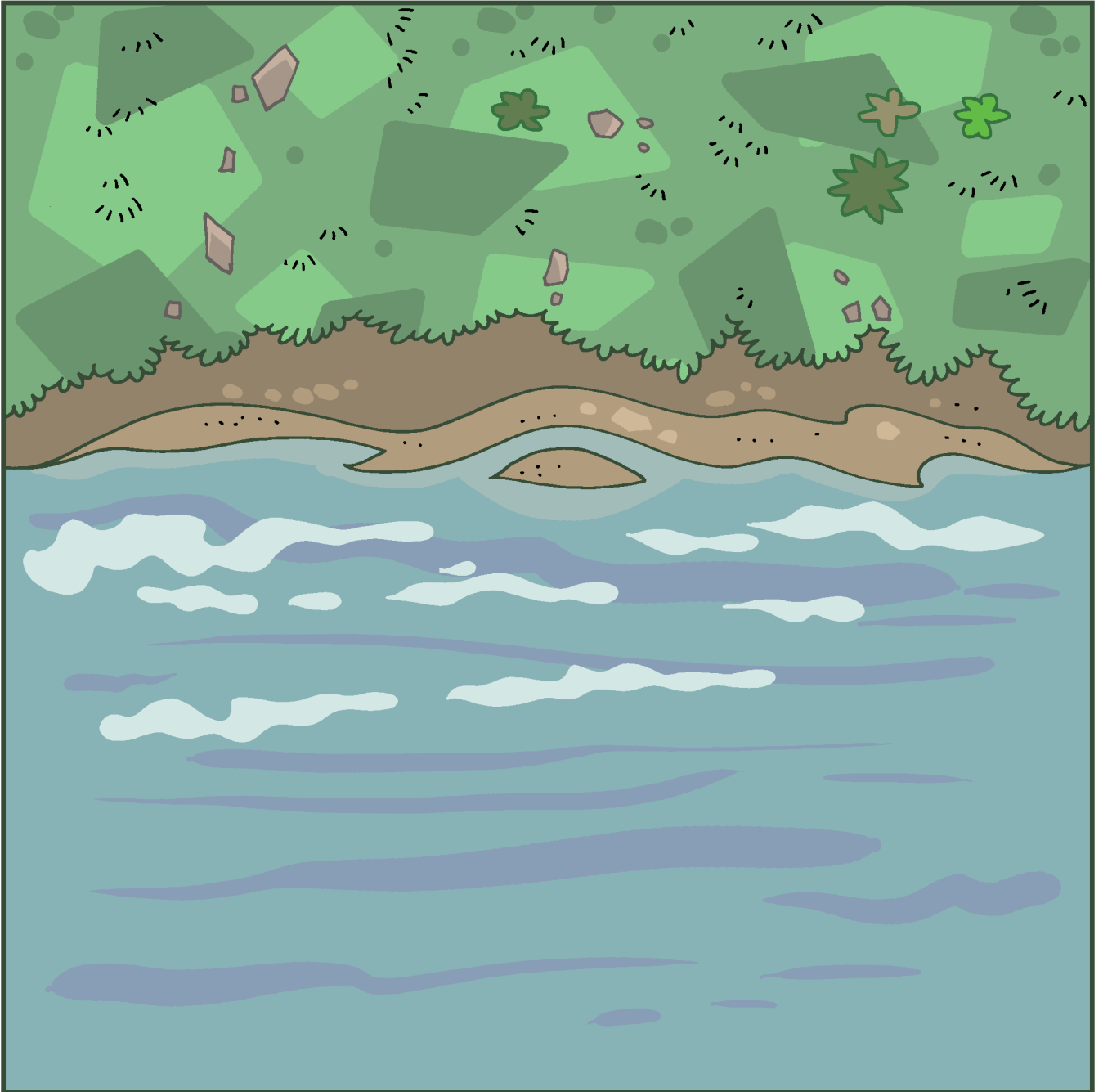
Water and grass 2



Water and grass 3



Water and grass 4



Water 5

